

**SCF**

**CONTAINER  
SOLUTIONS**





# YOUR ALL IN ONE SITE AMENITY SUPPLIER

SCF Capabilities		2
National Network		2
Why SCF for Your Site?		3
Making It Easy for You		3
<b>SITE SHEDS</b>		<b>4</b>
10ft Site Office	AA196-AKORA	5
20ft Ablution Block	AA296-ATB	7
20ft Change Room	AA296-AKO	9
20ft Crib Room	AA296-AES	11
20ft Site Office	AA296-AKO	13
20ft Portable First Aid Room	AA296-MEDICAL	15
20ft Hoarding Platform 10kPa	HP2	17
20ft Container Workshop	WS20	19
40ft Container Accommodation Unit	AK496-K4BB	21
40ft Container Office & Lunch Room	AK496-KAR	23
<b>OUR RANGE INCLUDES</b>		<b>25</b>
Shipping Containers		26
Dangerous Goods		27
Tanks		28
<b>PROJECTS</b>		<b>29</b>
Victoria Cross - North Sydney		30
254 Pitt St - Sydney		32
300 Pitt St - Sydney		34
Village Project - Palm Beach		36
Raptis Project - Broadbeach		38
Wharf St - Brisbane		40

# SCF Capabilities

With over 25 years experience, SCF has been supplying container solutions to some of Australia's most well known brands and organisations.

With a dedicated team of designers and engineers, we build stock that is designed to stand up and thrive in Australian conditions, for Australian projects.

Our Site Sheds are double stackable, which takes the headache out of space constrained sites. We can work with you to ensure all your site amenities fit onto site without compromise.

We also offer 10kPa overhead protection to ensure the safety of your team, site visitors and general public. We take safety seriously and know that it is critical to your business too.

In addition to our range of container solutions, we also supply 10kPa rated platforms and partner with a leading gantry supplier to ensure pedestrians and your workforce can get around easily and safely.

## National Network



With depots in Brisbane, Melbourne, Adelaide, Sydney, Perth, Darwin, Townsville and Karratha, we have Australia covered for shipping container solutions - making it easy to buy or hire a container that suits your needs!

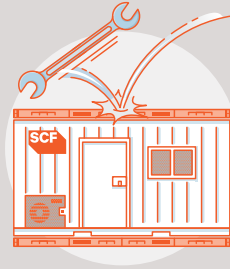


## Why SCF for Your Site?

SCF's construction offering covers everything that is important to you and your requirements.



Stackable Solutions



10kPa Overhead Protection



Overhead Storage

## Making It Easy for You

We have taken the headache out of dealing with multiple suppliers so you can focus on the important stuff. And safety is central to everything we do, which translates into our products and the way we do business.



1 Supplier



1 Focus on Safety



SITE SHEDS

# 10ft Site Office

AA196-AKORA

SCF site offices are the ideal unit to successfully manage your project from – insulated, air conditioned and saves on space on site.

## Key Features

- Built in desk
- Reverse cycle split system air conditioner
- Steel PA door with lockbox
- Sliding windows with flyscreen and security mesh
- Rockwool insulation
- External lighting

## Details

SCF Site Offices come with superior Rockwool insulation so you can make important decisions in peace and comfort. A split system reverse cycle air conditioner ensures temperature is steady in hot and cold environments too.

All units are built with a strong focus on safety and security including internal and external lighting and windows with fly screens and security mesh. The units are construction compliant with all Australian standards and the National Construction Code 2013.

Our construction range thrives in harsh environments. Built from steel (including steel doors) with high quality fittings, our units are designed to last so you can get on with your work.

## Specifications

10ft Site Office | AA196-AKORA

*Specifications may vary*

### Internal

Length (mm)	2,703
Width (mm)	2,150
Height (mm)	2,402

### External

Length (mm)	2,991
Width (mm)	2,438
Height (mm)	2,896

## Weight

Tare (kg)	4,100
Payload (kg)	3,200
MGW (kg)	5,000



Top:  
10ft Site Offices  
can fit on  
almost any site.

Middle:  
With built in desk,  
lighting, split system  
air conditioning and  
sliding windows,  
tasks can be  
performed in  
comfort and safety.



Below:  
Ideal for single user,  
part-time or limited  
office based  
requirements.





# 20ft Ablution Block

AA296-ATB

## Key Features

- Separate Male and Female toilets with individual access doors
- Installed hot water system
- 'Plug and Play' plumbing for quick and easy deployment
- 15A single phase, with Australian certification
- Windows with flyscreen and steel shutters for security and airflow
- Fluorescent LED Lights and double GPOs

## Options

- Shower Block with triple bathrooms; three bathrooms with shower, toilet, basin, vanity, heat light, clothes hook and towel rack
- Shower Block with double bathrooms and laundry room; two ensuites with shower, toilet, basin, vanity, heat light, clothes hook and towel rack, plus one laundry room with bench and fittings for laundry trough, washing machine and dryer
- Custom container modifications available to suit your needs

## Details

SCF Ablution Blocks are insulated for optimum temperature control and are fitted with urinals, cubicles, hot and cold water, and functional windows to improve natural airflow. Separate male and female facilities are also available, and our 'plug and play' plumbing ensures quick and easy deployment.

Every Ablution Block comes with power and lighting, and various cubicle configurations to suit your workforce needs including two stalls with two urinals (male), single (male) or double (female) basin and vanity.

Built with the same high-quality materials as our standard containers and portable buildings, the SCF Ablution Block is a staple for busy sites that require amenities. Each unit is construction compliant with all Australian standards and the National Construction Code 2013.

Our construction range thrives in harsh environments. Built from steel (including steel doors) with high quality fittings, our units are designed to last so your site isn't interrupted.

The Ablution Block is arguably the most important portable building on site. With various configurations, you can rest assured your team has suitable facilities to take a break.

## Specifications

20ft Ablution Block | AA296-ATB

*Specifications may vary*

### Internal

Length (mm)	5,770
Width (mm)	2,150
Height (mm)	2,440

### External

Length (mm)	6,058
Width (mm)	2,438
Height (mm)	2,896

## Weight

Tare (kg)	3,590
Payload (kg)	6,410
MGW (kg)	10,000



Top: SCF's Ablution Block has male and dedicated female facilities.

Middle Left: With a urinal and two cubicles in the main block, your team can quickly get their business done.



Middle Right: The separate toilet cubicle has the same wash facilities as the main block, for your team's sanitary needs.



Below: The main block has ample wash space, so your team can get it done quickly. It also includes hot water for those cold days.



# 20ft Change Room

AA296-AKO

Let your filthy team change into a fresh set of threads. SCF's 20ft change room is a dedicated, secure space for your team to change, refresh and safely store their belongings while they get the job done.

## Key Features

- Hooks and bench seating
- Steel PA doors with lockbox
- Windows with flyscreen and steel shutters for security
- Hard wired smoke detector with battery backup
- Split system reverse cycle air conditioning externally recessed
- Rockwool insulation
- Energy efficient internal and external lighting

## Options

- Multiple fitout options - bench seating or storage set up
- Custom container modification based on your requirements

## Details

SCF Change Rooms are built from high quality materials as our standard containers and portable buildings, the Change Room gives your team the privacy needed to get dressed and keep valuables safe. Built with a generous amount of internal room, so your crew will have all the space they need to get changed without a hassle.

Each room is fitted with a split system reverse cycle air conditioner and Rockwool insulation to ensure a comfortable temperature maintained throughout any season.

All units are built with a strong focus on safety and security including internal and external lighting and windows with fly screens and security mesh. The units are construction compliant with all Australian standards and the National Construction Code 2013.

## Specifications

20ft Change Room | AA296-AKO

*Specifications may vary*

### Internal

Length (mm)	5,770
Width (mm)	2,150
Height (mm)	2,440

### External

Length (mm)	6,058
Width (mm)	2,438
Height (mm)	2,896

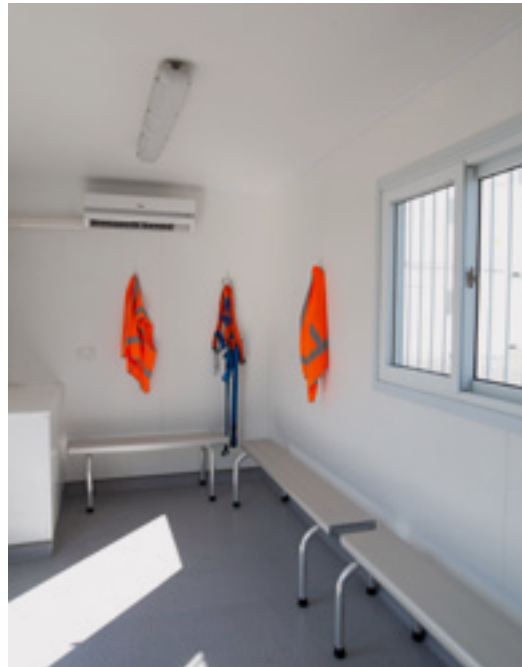
## Weight

Tare (kg)	3,370
Payload (kg)	6,630
MGW (kg)	10,000

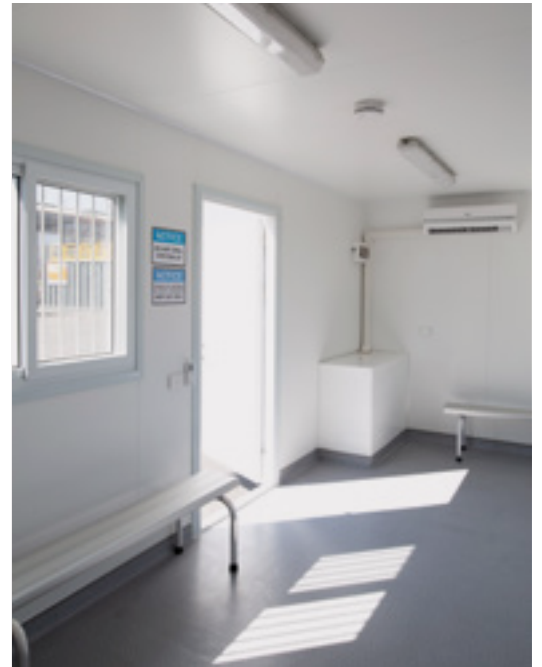


Top:  
Let your team  
refresh in a  
purpose built  
change room.

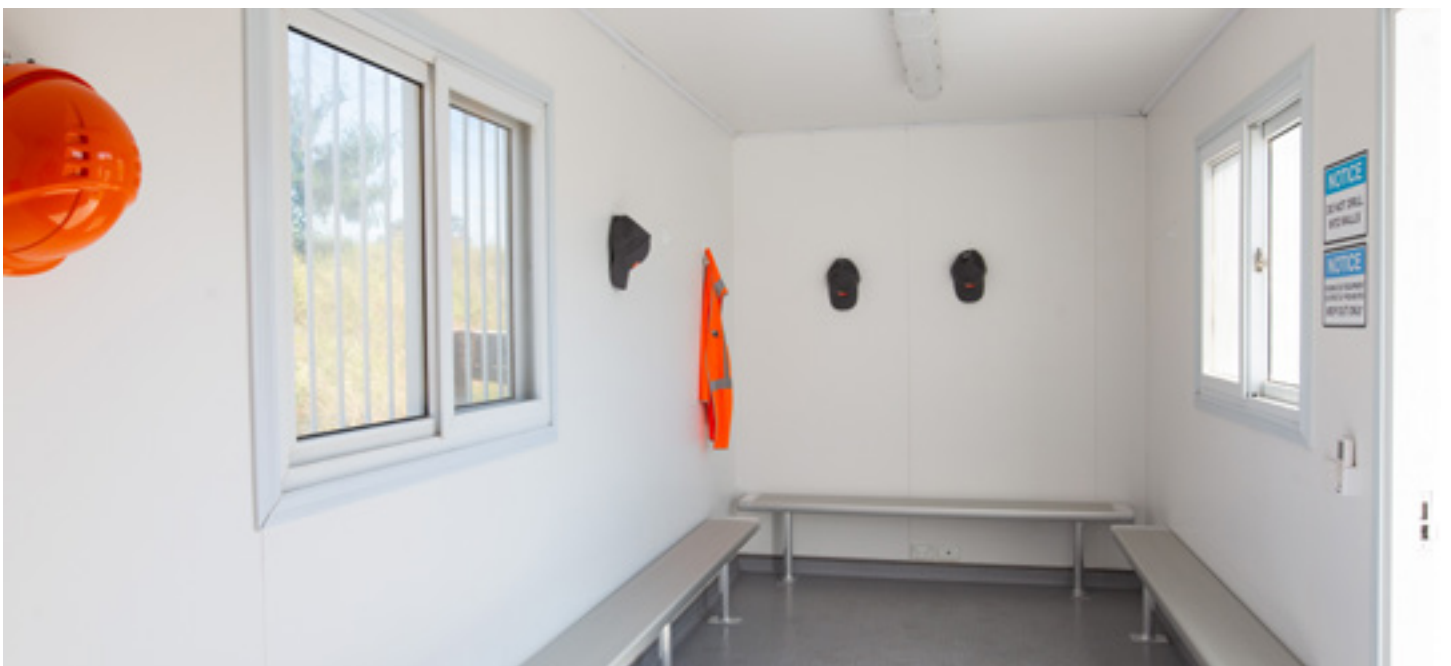
Middle Left:  
Bench seats  
and hooks  
provide ample  
space to  
change.



Middle Right:  
A reverse cycle  
split system air  
conditioner  
keeps your  
team  
comfortable.



Below:  
Safely and  
comfortably  
change on site



# 20ft Crib Room

AA296-AES

Keep your ravenous team going with a dedicated space to rest and refuel. SCF Crib Rooms have all the necessary features that your workforce requires.

## Key Features

- Rockwool insulation and split system reverse cycle air conditioning
- Hot and cold water
- Stainless steel kitchenette
- Energy efficient internal lighting

## Options

- Multiple fitout options – Lunchroom or office setup
- Table and seating for your team
- Custom container modification based on your requirements

## Details

Built with the same high-quality materials as our standard containers and portable buildings, the SCF Crib Room will contribute to the productivity of your workforce. Each unit is construction compliant with all Australian standards and the National Construction Code 2013.

All units are built with a strong focus on safety and security, including lockable steel doors, hardwired smoke alarms with battery backup, internal lighting and windows with fly screens and security mesh.

SCF Crib Rooms are installed with hot and cold water, sink, stainless steel kitchenette bench, split system reverse cycle air conditioning and lighting. There are also provisions for a microwave and refrigerator, which can be installed in depot prior to delivery. A team who can refuel in comfort will be able to complete higher quality work for longer.

Our construction range thrives in harsh environments. Built from steel (including steel doors) with high quality fittings, our units are designed to last so your site runs smoothly.

## Specifications

20ft Crib Room | AA296-AES

*Specifications may vary*

### Internal

Length (mm)	5,770
Width (mm)	2,150
Height (mm)	2,440

### External

Length (mm)	6,058
Width (mm)	2,438
Height (mm)	2,896

## Weight

Tare (kg)	3,370
Payload (kg)	6,630
MGW (kg)	10,000



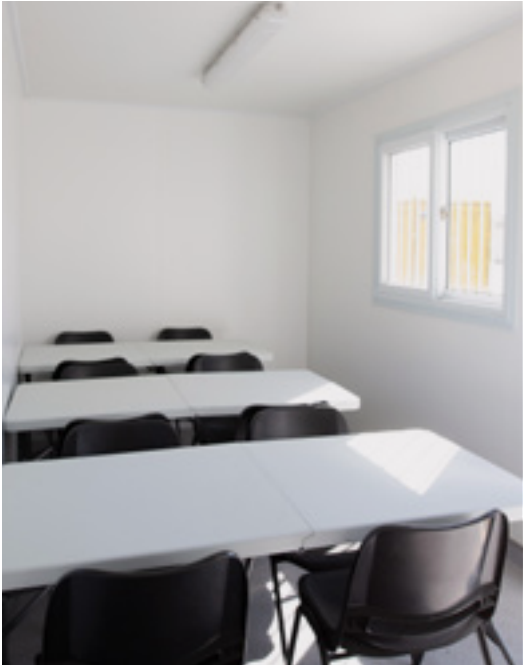


Top: SCF's Crib Room can be stacked for increased flexibility on space constrained sites.

Middle Left: A stainless steel kitchenette with hot and cold water.



Middle Right: Various configurations available based on your needs.



Below: With air conditioning and Rockwool insulation, your team can rest in comfort.



# 20ft Site Office

AA296-AKO

SCF site offices are the ideal unit to successfully manage your project from – insulated, air conditioned and configurable to your needs.

## Key Features

- Rockwool insulation
- Split system reverse cycle air conditioning externally recessed (within 20ft footprint)
- Hard wired smoke detector with battery backup
- Steel PA doors with lockbox
- Windows with flyscreen and security mesh

## Options

- Multiple fitout options including:
- Single Office
  - Team setup
  - Meeting room
  - Furniture for your team
  - Custom container modifications based on your requirements

## Details

Built with the same high-quality materials as our standard containers and portable buildings, the SCF site office will provide the optimum working space for you and your team.

SCF Site Offices come with superior Rockwool insulation so you can make important decisions in peace and comfort. A split system reverse cycle air conditioner ensures temperature is steady in hot and cold environments too.

All units are built with a strong focus on safety and security including internal and external lighting and windows with fly screens and security mesh. The units are construction compliant with all Australian standards and the National Construction Code 2013.

Depending on your requirements, a range of internal layouts can also be arranged. Choices include a single office, setups for a team or a meeting room.

Our construction range thrives in harsh environments. Built from steel (including steel doors) with high quality fittings, our units are designed to last so you can get on with your work.

## Specifications

20ft Site Office | AA296-AKO

*Specifications may vary*

### Internal

Length (mm)	5,770
Width (mm)	2,150
Height (mm)	2,440

### External

Length (mm)	6,058
Width (mm)	2,438
Height (mm)	2,896

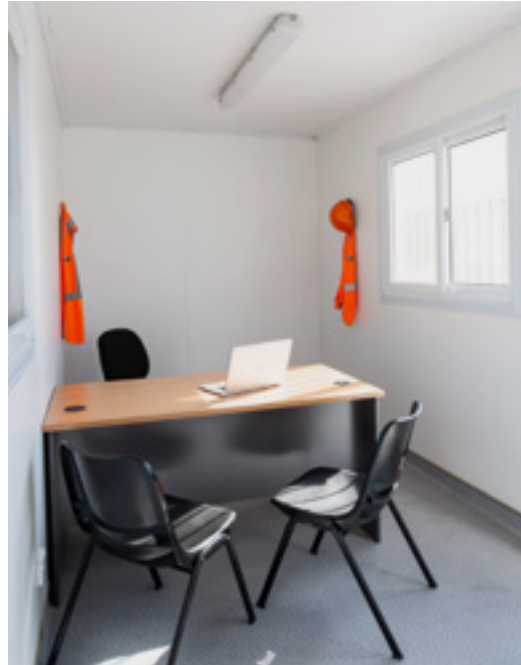
## Weight

Tare (kg)	3,340
Payload (kg)	6,660
MGW (kg)	10,000



Top:  
SCF's Site Office provides the ideal space to manage your project from - safe, well insulated and comfortable.

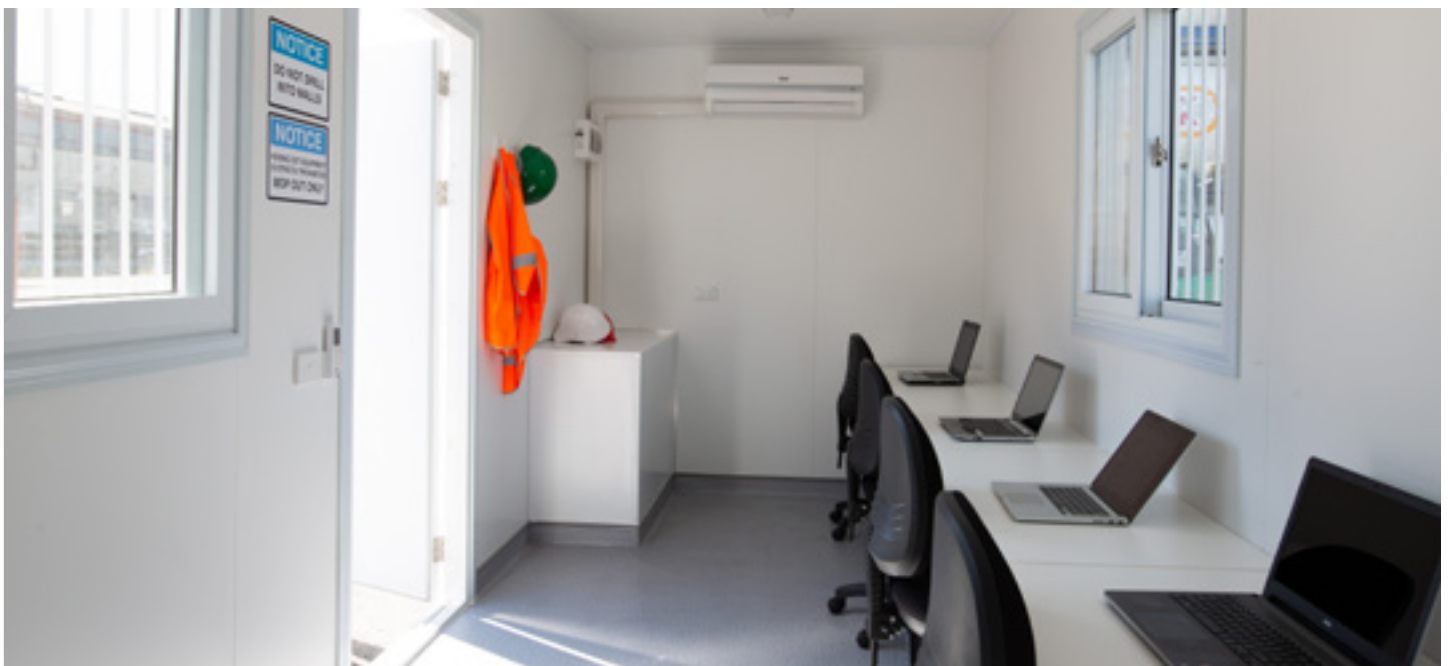
Middle Left:  
Hard wearing floors, windows with fly screens and security mesh, and Rockwool insulation ensure a comfortable working environment.



Middle Right:  
Easy access to power.



Below:  
Various configurations available to suit individuals or teams.



# 20ft Portable First Aid Room

AA296-MEDICAL

A portable medical building or first aid room provides your team with a facility to treat patients in a purpose-built environment that is safe and clean.

## Key Features

- Rockwool insulation and split system reverse cycle air conditioning
- Hot and cold water
- Stainless steel kitchenette
- Hard wearing vinyl floor for easy cleaning and maintenance

## Options

- Configuration options - chairs, desks and treatment tables
- Custom container modification based on your requirements

## Details

SCF's Portable First Aid Rooms are a temporary, purpose-built medical facility which allows for the treatment of patients safely onsite. It has been designed with a range of medical focused features, including a hard-wearing vinyl floor, which is easy to clean and maintain.

All units are built with a strong focus on safety and security, including lockable steel doors, hardwired smoke alarms with battery backup, internal lighting and windows with fly screens and security mesh.

SCF Portable First Aid Rooms are equipped with hot and cold water, sink, stainless steel kitchenette bench, split system reverse cycle air conditioning and lighting. There is also internal power for workstations, powering medical equipment or charging devices.

Our portable medical buildings and our entire portable building range thrives in harsh environments. Built from steel (including steel doors) with high-quality fittings, our units are designed to last so your site runs smoothly. They can also be deployed quickly and safely on short notice.

## Specifications

20ft Portable First Aid Room | AA296-MEDICAL

*Specifications may vary*

### Internal

Length (mm)	5,770
Width (mm)	2,150
Height (mm)	2,440

### External

Length (mm)	6,058
Width (mm)	2,438
Height (mm)	2,896

## Weight

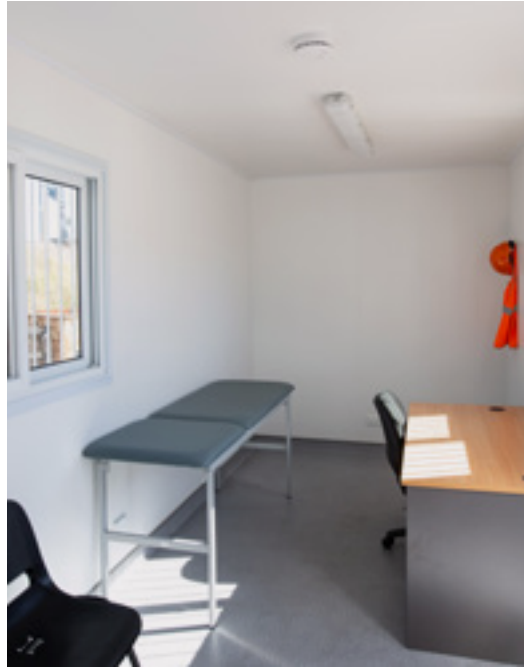
Tare (kg)	3,000
Payload (kg)	7,000
MGW (kg)	10,000



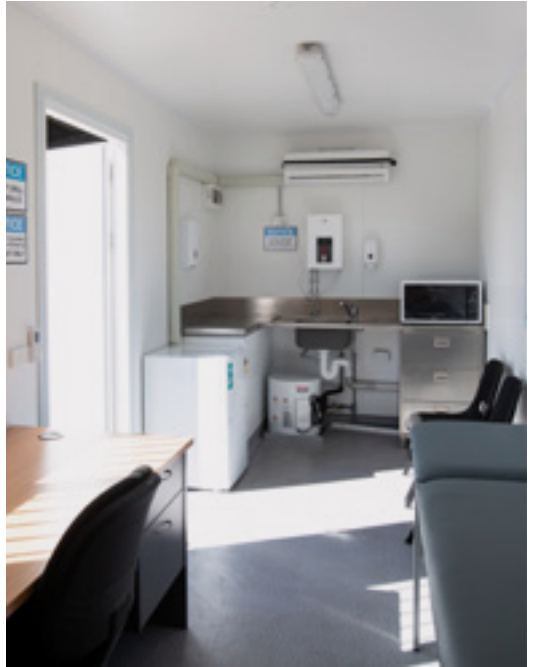


Top:  
The 20ft First Aid room can be stacked like all other SCF Site Sheds.

Middle Left:  
Depending on your requirements, a range of configurations are available.



Middle Right:  
All First Aid rooms come with air conditioning and a kitchenette.



Below:  
Treat your team in a suitable First Aid container and reduce downtime on the job.





# 20ft Hoarding Platform 10kPa

HP2

SCF's 10kPa hoarding platform provides overhead protection that complies with Australian standards. Protect your staff on site with easy installation.

## Key Features

- Cantilevered walkways
- Built in facilities for certified hand rails
- Complied with Australian Standards AS4100, AS1170.1 & AS1170.2
- Code of practice 1995-overhead protective structure
- Wind rain guard option designed to help reduce water & wind ingress

## Options

- Wind rain guard to help reduce water and wind ingress
- Hand rails

## Details

SCF's 10kPa hoarding platform provides overhead protection for staff in portable buildings and on walkways.

The platform complies with Australian Standards AS4100 steel structures, AS1170.1 structural design actions, AS1170.2 wind actions and the Code of practice 1995-overhead protective structure.

Integrated certified anchor points assist with safe installation or dismantle when working at heights.

A range of options make it a flexible option for your worksite.

## Specifications

20ft Hoarding Platform 10kPa | HP2

*Specifications may vary*

### Internal

Length (mm)

Width (mm)

Height (mm)

### External

Length (mm)

Width (mm)

Height (mm)

6,058

2,438

260

## Weight

Tare (kg) 2,000

Payload (kg) 20,000

MGW (kg)



Top:  
Stackable  
10kPa  
platforms  
provide  
protection for  
your team, site  
visitors and  
pedestrians  
below.

Middle Left:  
Our platforms and  
containers can be  
multi stacked for  
space constrained  
sites.



Middle Right:  
Built for Australian  
construction sites.

Below:  
Speak to SCF for  
your complete site  
shed and gantry  
solution.



# 20ft Container Workshop

WS20

## Key Features

- Lock-box provides security for onsite storage of equipment
- Easily transportable with low mobilisation costs
- Base level workshop includes 3 tier shelving rated to 400kgs
- Powered units include single phase wiring, energy efficient lighting and an easily accessible GPO
- Can customise to meet your exact requirements

## Options

Container workshops offer a high level of flexibility based on your needs

- For harsh weather conditions, insulation and reverse cycle air-conditioning with 3-phase power can be included to provide a safe working environment
- Personal Access, roller and double doors for increased access
- Windows or hatches
- Heavy duty workbenches and steel floors
- Aluminium flooring to reduce risk from sparks and spillage
- Additional GPO's for flexible positioning of power tools
- Hard wired smoke alarms for improved safety
- Whirly birds for additional ventilation

## Details

A flexible alternative, the SCF Shipping Container workshop provides a safe, isolated location to complete a range of works. This site shed has ample storage for tools and equipment. Lockable cages can be installed to protect tools from quick hands, or secure dangerous items that should only be used by qualified trades.

All workshop containers are lockable to protect items out of hours.

They have been built with a strong focus on safety to satisfy all the necessary OH&S requirements. Give your trades or yourself a recognised space to safely complete their work that won't impact others onsite.

Our construction range thrives in harsh environments. Built from steel (including steel doors) with high quality fittings, our units are designed to last so your team can complete your work or you can tinker away.

No workshop provisions onsite? Consider an SCF Shipping Container Workshop. A ready-made container with shelves and workbench provides a safe, isolated space to complete a wide range of work. It is a strong, secure alternative to a shed or garage.

## Specifications

20ft Container Workshop | WS20

*Specifications may vary*

### Internal

Length (mm)	5,898
Width (mm)	2,350
Height (mm)	2,700

### External

Length (mm)	6,058
Width (mm)	2,438
Height (mm)	2,896

## Weight

Tare (kg)	2,315
Payload (kg)	28,165
MGW (kg)	30,480



Top:  
Workshops  
provide extra  
ceiling height  
so you can  
access your  
stuff easily.

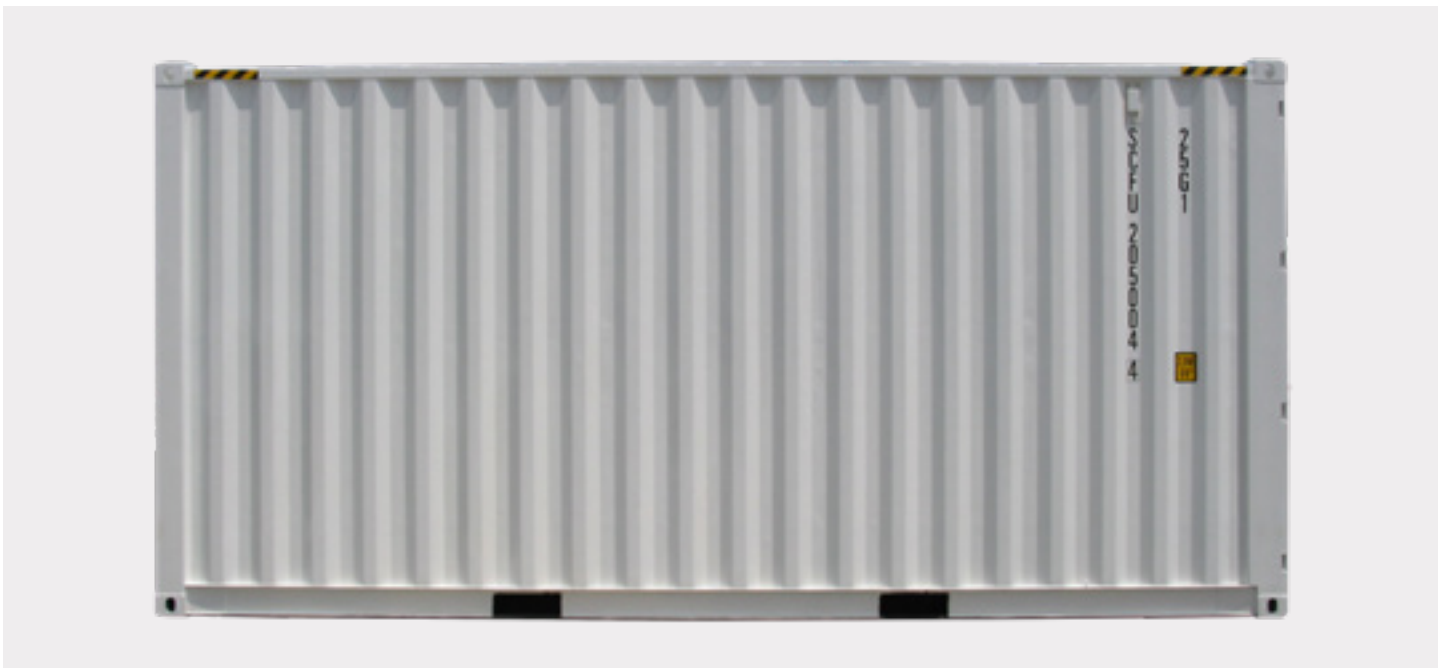
Middle Left:  
Single or  
double shelves  
are available.



Middle Right:  
Add shelving in  
your workshop  
to store your  
equipment.



Below:  
Looks just like a  
20ft container  
from side on.





# 40ft Container Accommodation Unit

AK496-K4BB

## Key Features

- 4 Bedrooms each with individual windows
- Rockwool insulation and split system reverse cycle air conditioning
- Energy efficient internal and external lighting
- Deployable to category D cyclone regions
- Windows with flyscreens and steel shutters for security

## Options

- Bathroom facilities with shower, toilet, vanity cupboard and exhaust fan
- Kitchen unit with sink and overhead cupboard

## Details

Providing secure individual bedroom spaces for workers, the SCF Container Accommodation unit is regularly utilised on sites with a workforce that resides on or near the site. Adding to the 4 bedroom container unit is easy, with a range of flexible configurations or amenity containers available to suit your site's requirements.

Comfort is paramount, with split system reverse cycle air conditioning, internal phone and data points and various furniture layouts, including a king single bed. A well-rested employee is a far more effective employee, and SCF caters for this.

All portable accommodation units are built with a strong focus on safety, including lockable steel doors, hardwired smoke alarms with battery backup, internal and external lighting and windows with fly screens and steel shutters. This is underpinned with Australian certified 3 phase power.

Each unit is construction compliant with all Australian standards and the National Construction Code 2013.

Our construction range thrives in harsh environments. Built from steel (including steel doors) with high-quality fittings, our accommodation units are designed to last so your site can get on with the job.

SCF's portable accommodation units combine the durability and mobility of shipping container construction with quality internal accommodation design, to provide a comfortable home away from home for multiple users.

## Specifications

40ft Container Accommodation | AK496-K4BB

*Specifications may vary*

### Internal

Length (mm)	11,884
Width (mm)	2,150
Height (mm)	2,405

### External

Length (mm)	12,192
Width (mm)	2,438
Height (mm)	2,896

### Weight

Tare (kg)	7,320
Payload (kg)	7,680
MGW (kg)	15,000



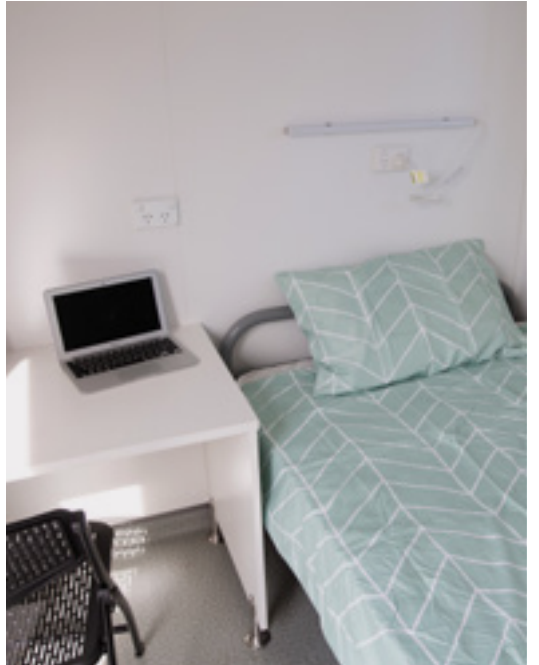


Top:  
4 separate  
bedrooms  
provide a  
private space to  
live.

Middle Left:  
Operable  
window, air  
conditioning,  
wardrobe and  
bedding  
provide a  
comfortable  
space.



Middle Right:  
A bed, desk and  
chair provide all  
the furniture  
you need.



Below:  
Ample  
powerpoints  
and lighting  
mean you can  
continue to  
work, read or  
recharge.



# 40ft Container Office & Lunch Room

AK496-KAR

Got a big site and need a big solution? Choose a 40ft container room instead of two 20ft units. Safe and quick to deploy onsite.

## Key Features

- Double stackable - 1x 40ft or 2 x 20ft containers
- Rockwool insulation
- Split system reverse cycle air conditioning externally recessed (within each 20ft footprint)
- Hard wired smoke detector with battery backup
- Steel PA doors with lockbox
- Windows with flyscreen and security mesh

## Options

Multiple fitout options

- 2 x Container Offices, 2 x Lunch Rooms, 1 of each, or open plan Lunch Room
- Adequate table and seating for your team depending on your configuration
- Custom container modification based on your requirements

## Details

The SCF 40ft Container Office/ Lunch Room is a dedicated space for your team and contractors to safely manage projects, eat lunch, enjoy hot or cold drinks, and light refreshments throughout the day. The 40ft unit is particularly popular for sites that require multiple rooms and levels for the workforce.

Each unit is construction compliant with all Australian standards and the National Construction Code 2013. All units are built with a strong focus on safety and security, including lockable steel doors, hardwired smoke alarms with battery backup, internal lighting and windows with fly screens and security mesh.

Our construction range thrives in harsh environments. Built from steel (including steel doors) with high quality fittings, our units are designed to last so your site runs smoothly.

## Specifications

40ft Container Office & Lunch Room | AK496-KAR

*Specifications may vary*

### Internal

Length (mm)	11,904
Width (mm)	2,150
Height (mm)	2,402

### External

Length (mm)	12,192
Width (mm)	2,438
Height (mm)	2,896

## Weight

Tare (kg)	5,000
Payload (kg)	10,000
MGW (kg)	15,000



Top:  
Choose 1 x 40ft unit instead of 2 x 20ft units for quicker and safer install.

Middle Left:  
Open plan with kitchen or two spaces separated by a wall - your choice.



Middle Right:  
Kitchenette comes as standard.



Below:  
40ft units are stackable, so you can fit more than one on a space constrained site..





OUR  
RANGE  
INCLUDES



## Shipping Containers

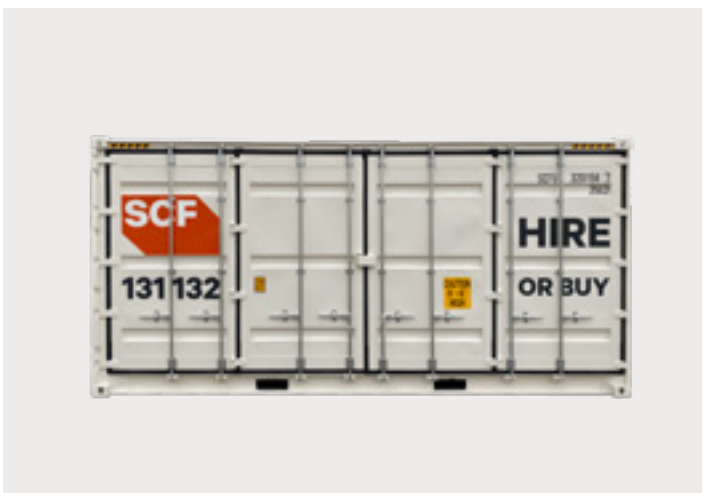
SCF's range of shipping containers provide ample onsite storage. Protect tools and equipment from wind, rain and vermin in a purpose built storage container.



10ft Shipping Container



20ft Shipping Container



20ft Side Opening Shipping Container



40ft High Cube Shipping Container



# Dangerous Goods

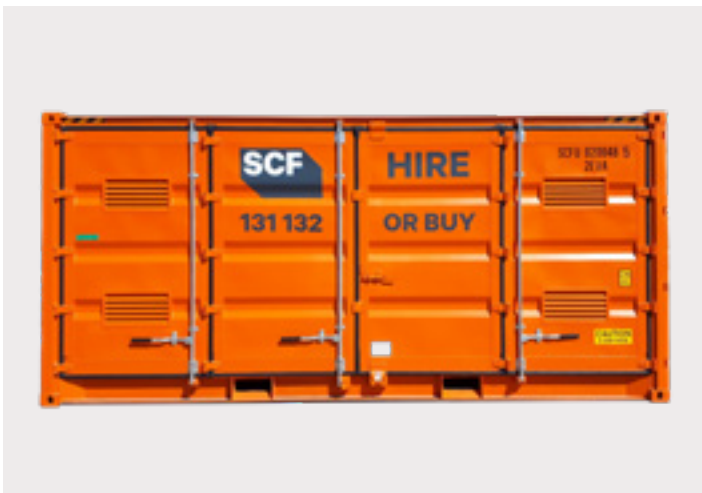
SCF Dangerous Goods containers provide safe, external storage for all your dangerous goods, including chemicals, paints and thinners, in individual packages or IBCs.



Chemical Storage Cabinet



10ft Dangerous Goods Container



20ft Single Side Door Dangerous Goods Container



20ft Double Side Door Dangerous Goods Container

## Tanks

SCF has a range of tank containers for bulk liquid storage on construction sites of various sizes. Each tank is designed with industry leading safety and operational features to make your job easier.



25ft Bulk Liquid Storage Tank - 37,000L



ISO Liquid Tank



45ft Bulk Liquid Storage Tank - 77,000L

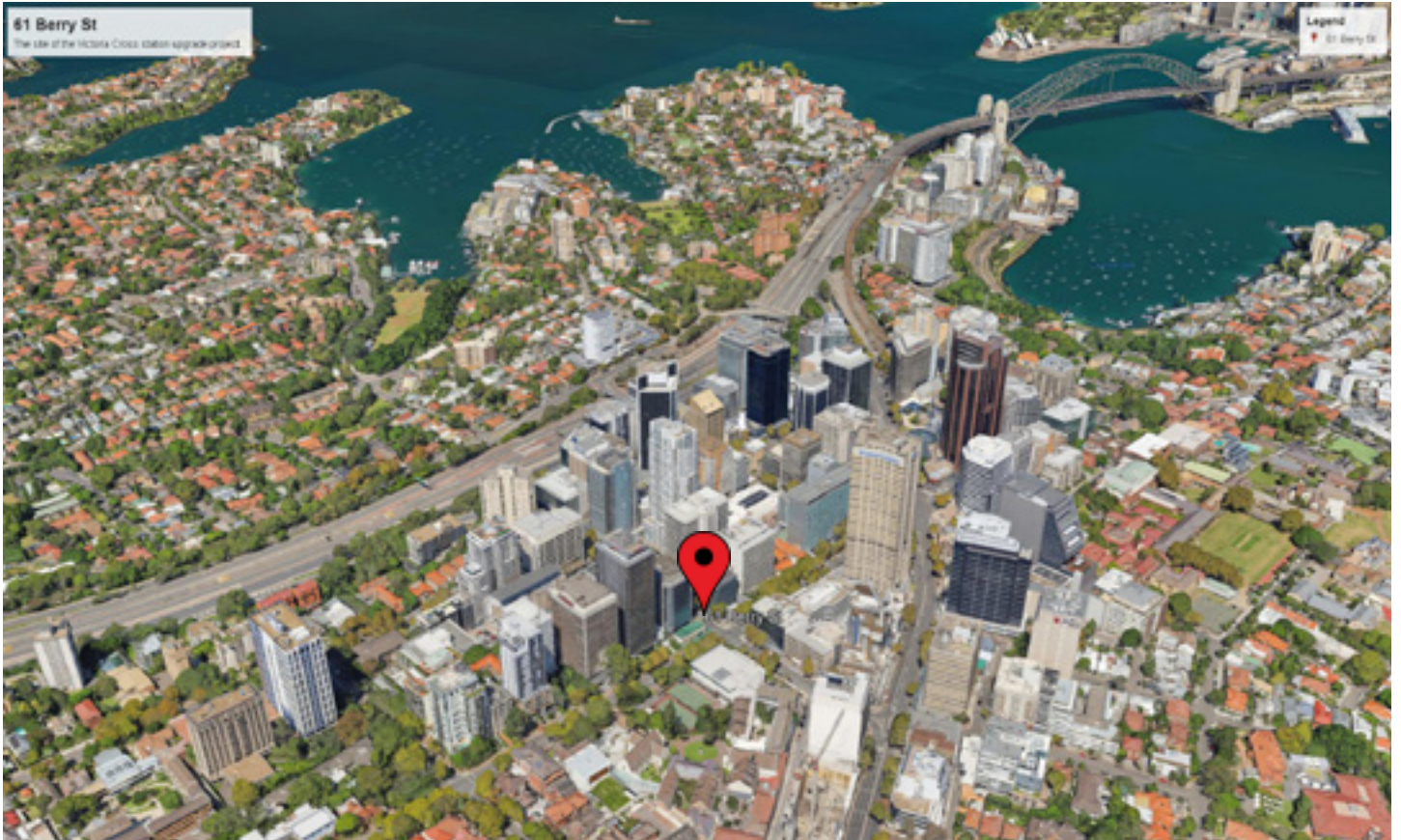




# PROJECTS



# Victoria Cross - North Sydney



## Project Summary

As part of the ongoing Sydney Metro upgrade, the Victoria Cross station project will see the development of a station located beneath the ground, with a multi-purpose building located above.

The station will be located beneath Miller Street, to the north of the Pacific Highway.

## Site Challenges

Located just north of the Harbour Bridge, this corner site required many sheds on a small footprint. The ability to multi-stack meant that all the amenities could fit. Install was completed after hours to reduce the impact on pedestrians and traffic.

## SCF Site Sheds Deployed

- 19 x 20ft Change Rooms
- 36 x 20ft Lunch Rooms
- 9 x 20ft Ablution Blocks
- 1 x 20ft First Aid Room
- 1 x 20ft Shower Block
- 120 x 10kPa Platforms



This site includes ablution blocks, site offices, lunch rooms, first aid rooms, a shower block and change rooms.





SCF

131 132

SCF

131 132

SCF

131 132

SCF

131 132

SCF

131 132

SCF

11112

SCF

11112

SCF

1112

40

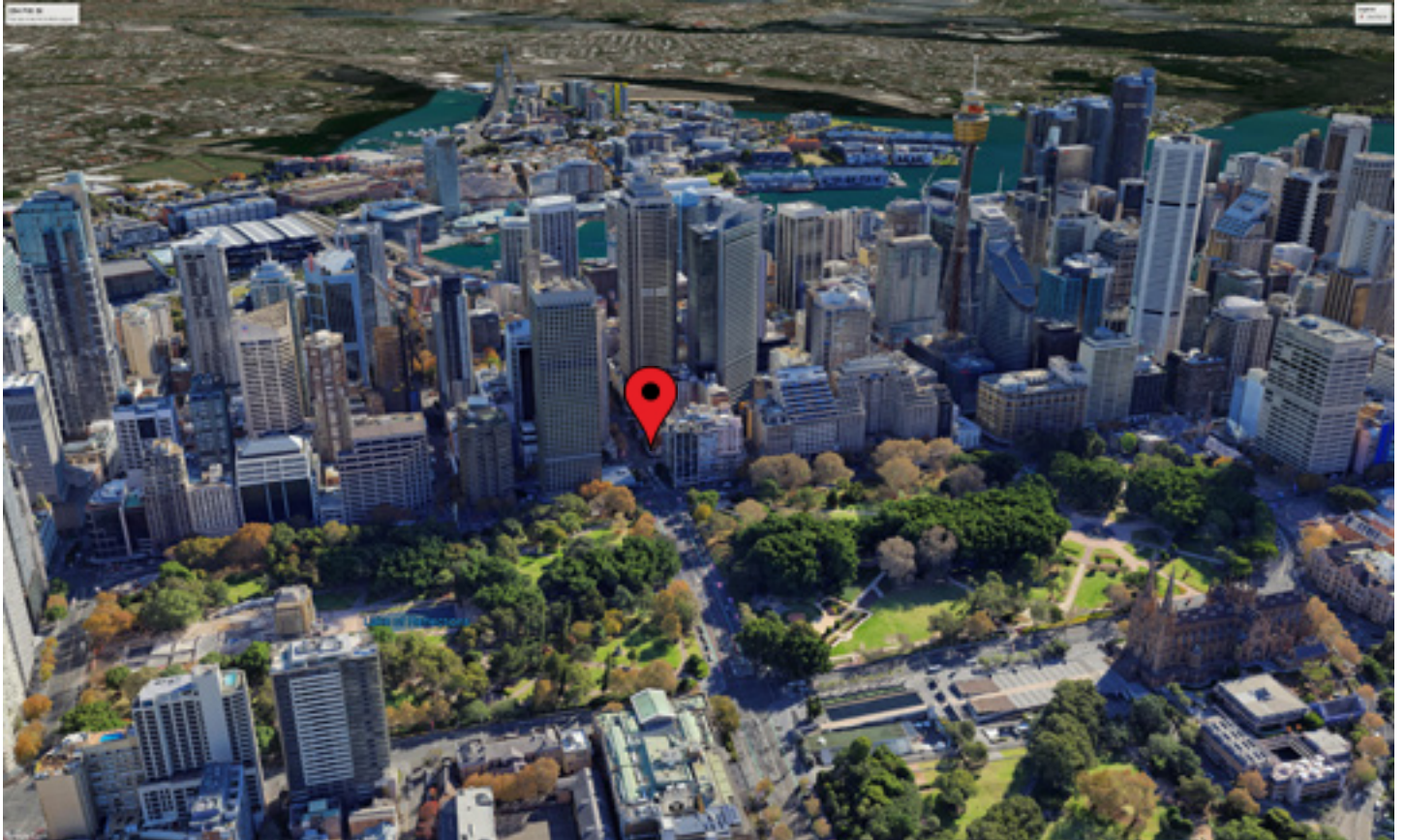
USE OTHER  
FOOTPATH

PEDESTRIANS  
→

FOOTPATH  
CLOSED



# 254 Pitt St - Sydney



## Project Summary

As part of the ongoing Sydney Metro upgrade, the Pitt Street North project will see the development of a station located beneath the ground, with a multi-purpose building located above.

Tunneling and excavation was completed in late 2020, with construction starting soon after.

## Site Challenges

Located in the heart of Sydney, this site is exposed to a significant amount of traffic and pedestrians. The multi-stack arrangement enabled sufficient site amenities on a space constrained site. Install was completed after hours to reduce the impact on traffic.

## SCF Site Sheds Deployed

- 11 x 20ft Change Rooms
- 29 x 20ft Lunch Rooms
- 2 x 20ft First Aid Room
- 5 x 20ft Ablution Blocks
- 1 x 20ft Shower Block
- 102 x 10kPa Platforms



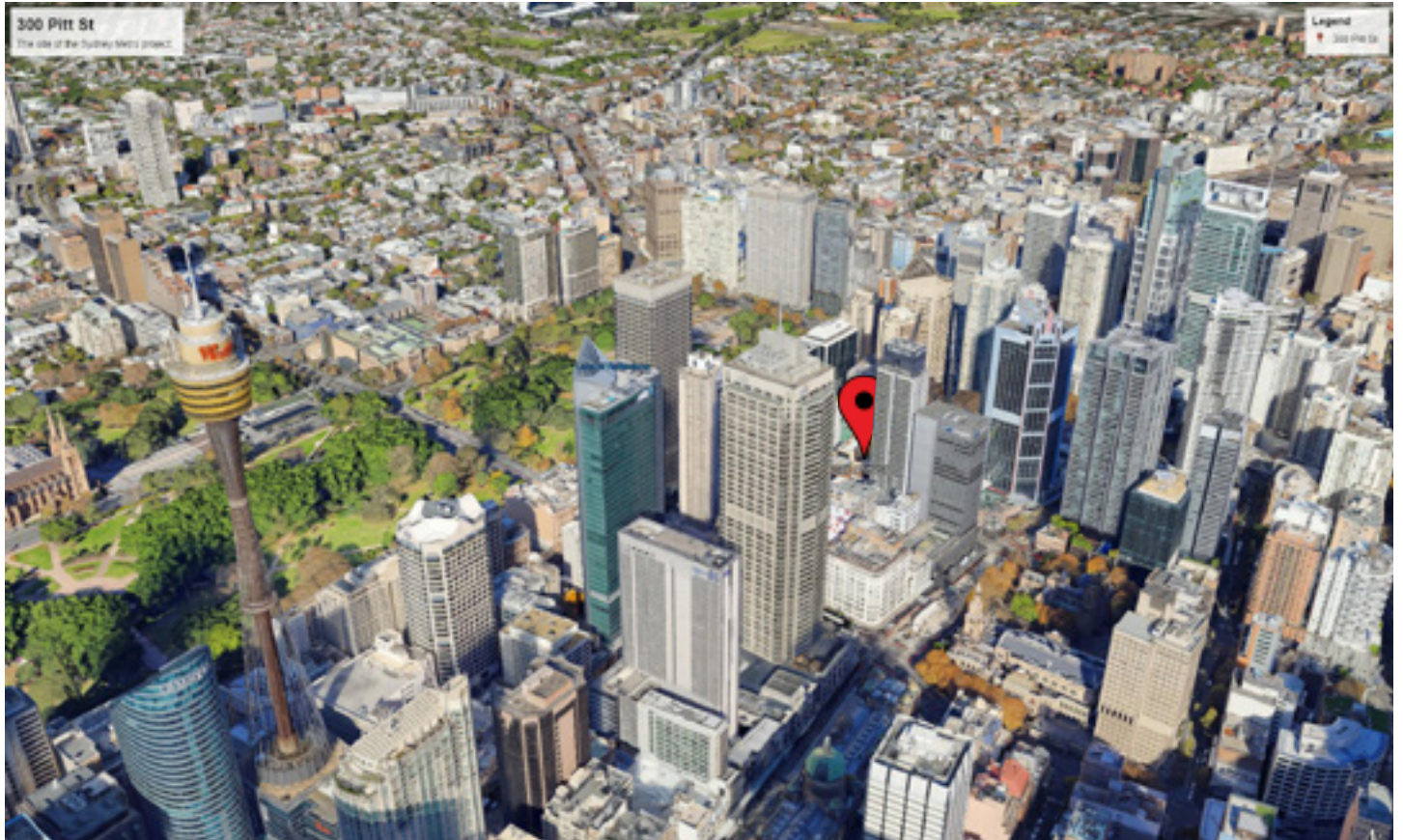
Located in the heart of the city, these Site Sheds provide a range of dedicated spaces







# 300 Pitt St - Sydney



## Project Summary

As part of the ongoing Sydney Metro upgrade, the Pitt Street South project will see the development of a station located beneath the ground, with a multi-purpose building located above.

Tunneling and excavation was completed in late 2020, with construction starting soon after.

## Site Challenges

Located in the heart of Sydney, this site is exposed to a significant amount of traffic and pedestrians. The multi-stack arrangement enabled sufficient site amenities on a space constrained site. Install was completed after hours to reduce the impact on traffic.

## SCF Site Sheds Deployed

- 11 x 20ft Change Rooms
- 29 x 20ft Lunch Rooms
- 2 x 20ft First Aid Room
- 5 x 20ft Ablution Blocks
- 1 x 20ft Shower Block
- 102 x 10kPa Platforms



Stacked above a busy footpath and an even busier street in Sydney



**300 Pitt St**

The site of the Pitt St Metro project.

**Legend**

300 Pitt St





# Village Project - Palm Beach



10kPa platforms provide overhead protection



Overhead crane storage for all that extra stuff you need to store

## Project Summary

Village, a new residential project in Palm Beach, has received development approval for 72 one, two and three bedroom apartments, and 3 four-bedroom beach homes.

## Site Challenges

Site conditions were very tight for this project. SCF were able to offer Hutchinson builders top level crane storage, whilst maintaining 10kPa overhead protection for all staff, contractors and visitors.

## SCF Site Sheds Deployed

- 1 x 20' Ablution Block
- 5 x 20' Lunch Rooms
- 12 x 10kPa Platforms
- The sheds are placed on concrete footings.



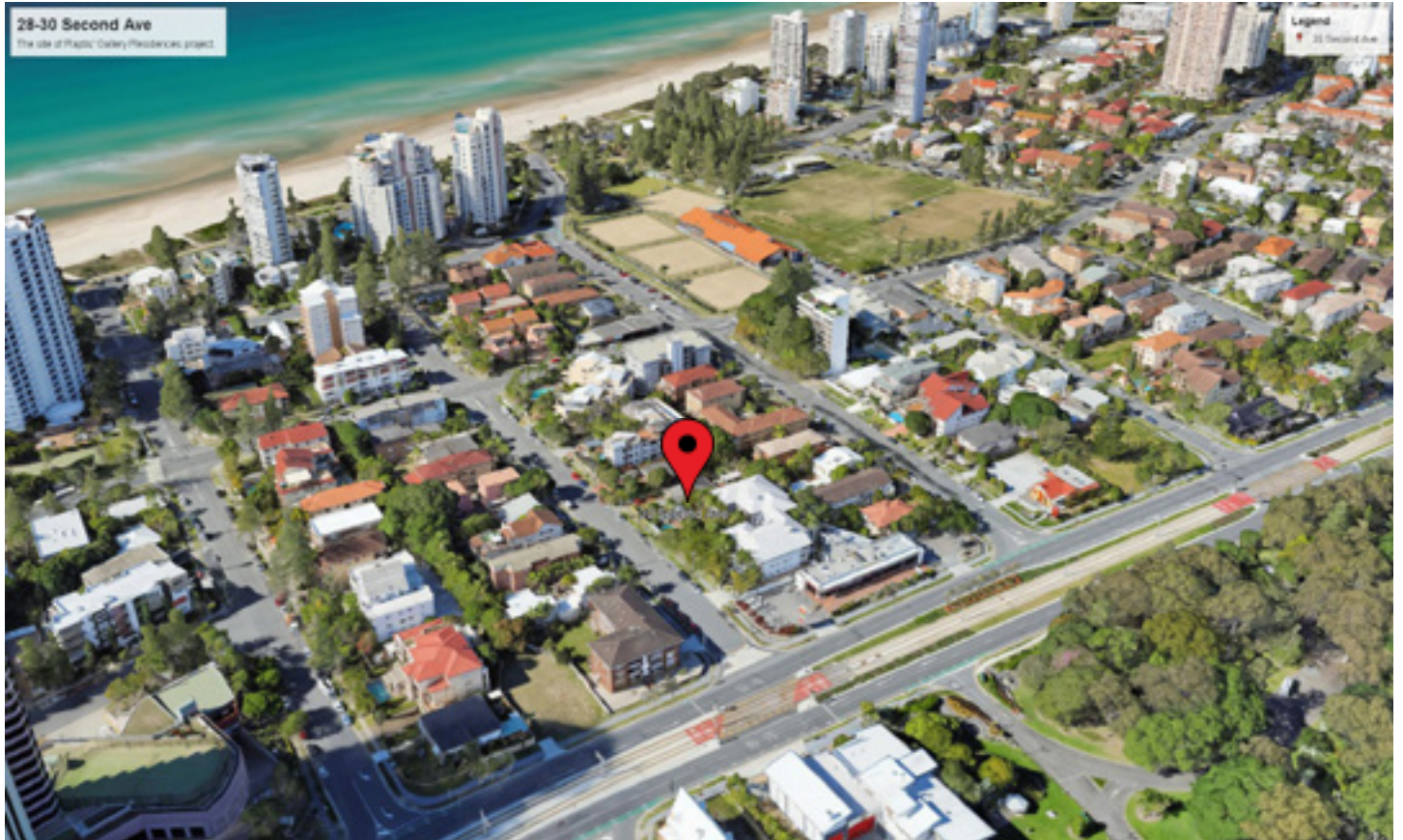
SCF Site Sheds are stackable for space constrained sites







# Raptis Project - Broadbeach



Various Site Sheds deployed to ensure the project runs smoothly

## Project Summary

109 apartments built over 19 levels, The Gallery Residences is a modern showpiece emboldened by contemporary lines.

## Site Challenges

This construction site lacked space for onsite amenities. The solution? To go up. SCF's triple stack meant 6 Site Sheds could be installed onsite. Install required finesse on this tight space, with buildings only metres from amenities.

## SCF Site Sheds Deployed

- SCF's first triple stack site solution
- 4 x 20' Lunch Rooms
- 2 x 20' Ablution Blocks
- 12 x 10kPa Platforms
- Containers placed on concrete footings,



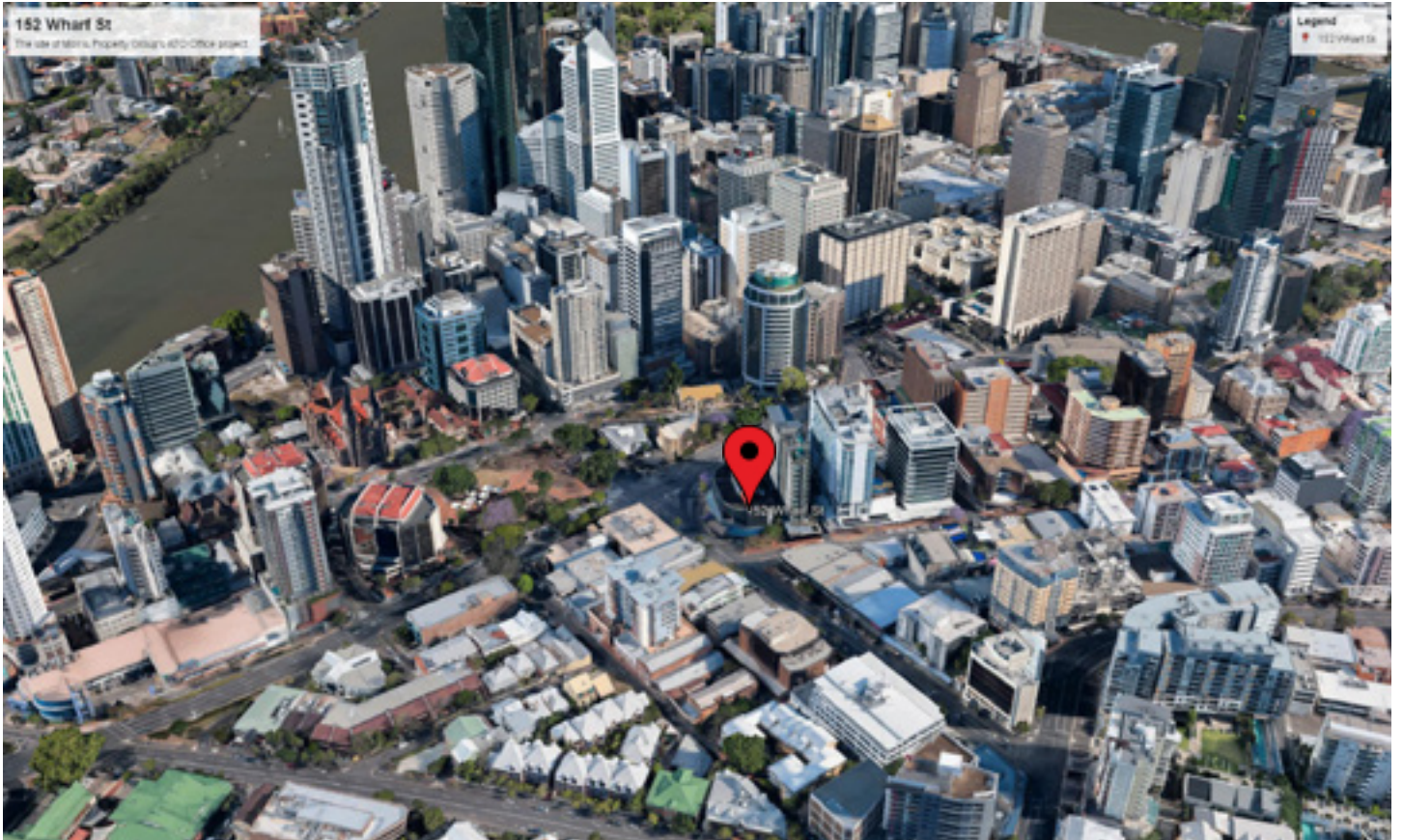
The project further into the build, with the structure taking shape







# Wharf St - Brisbane



Loading overhead protection at the start of the project



Site constraints meant a double stack with 40ft containers was required

## Project Summary

The \$160m PCA A-Grade tower comprises 24,000m<sup>2</sup> of office space, 1,200m<sup>2</sup> floor plates, and 5 Star NABERS and Greenstar ratings.

## Site Challenges

SCF were able to provide 10kPa overhead protection and top level crane storage due to site space limitations. All containers were double stacked and placed on B-Class hoarding to allow pedestrian access.

## SCF Site Sheds Deployed

- 4 x 40' Site Sheds
  - 2 x Offices with walks on each end
  - 2 x Lunch Rooms,
- 1 x 20' First Aid Room
- 1 x 20' M/F Ablution Block
- 1 x 20' Site Office (configured for meetings)
- 1 x 20' Lunch Room



SCF Site Sheds visible at night







